

The Beeches, 200 Lampton Road, Hounslow, TW3 4DF

£229,950

A well presented one bedroom third floor flat situated in this popular development with access to Hounslow Town Centre, Hounslow Central Tube Station and further transport links. The accommodation comprises lounge, modern kitchen and bathroom. Benefits includes secondary glazed windows, electric heating, allocated parking space and communal gardens. Viewings recommended.

A partner of
The Guild Of Professional Estate Agents
with a network of over 700 independent estate agents

Associated Office: 121 Park Lane, Mayfair, London W1K 7AG t 020 7318 7075

Communal Entrance

Door with entry phone, stairs to third floor.

Entrance Hallway

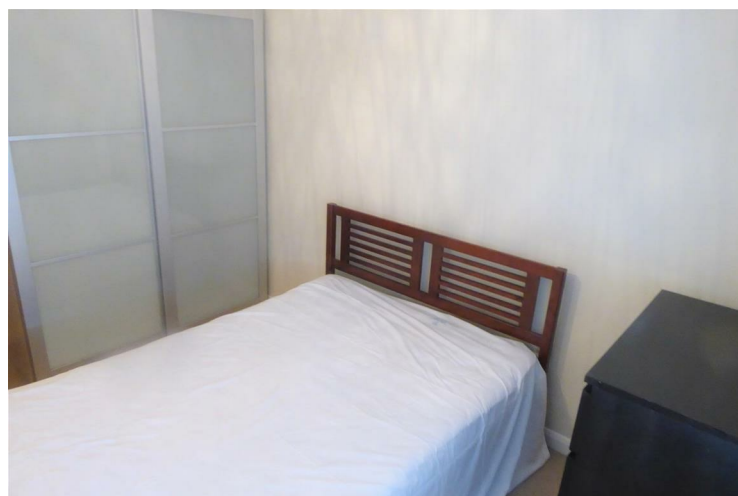
Wood flooring, doors to...

Lounge

Front aspect secondary glazed window, electric heater, wood flooring, leading through to...

Kitchen

Modern kitchen with a range of wall and base units, single drainer sink with mixer tap, 4 ring electric hob with electric oven below and extractor above, part tiled walls, space for fridge/freezer and washing machine, tiled flooring, front aspect secondary glazed window,

Bedroom

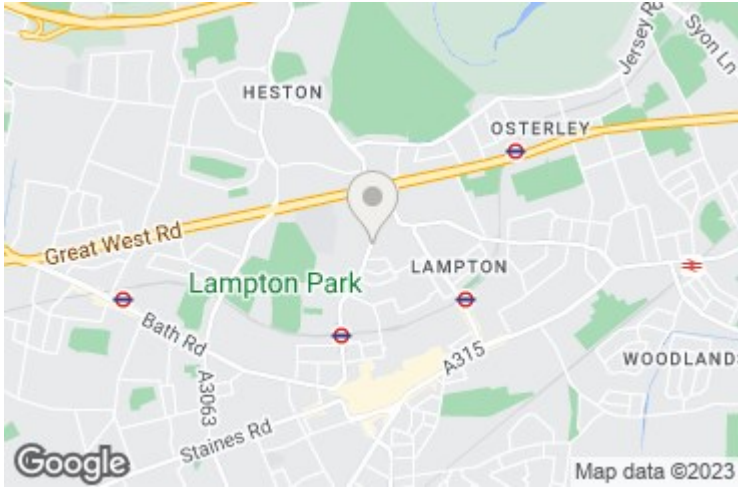
Front aspect secondary glazed window, electric heater, fitted wardrobe, airing cupboard housing hot water tank.

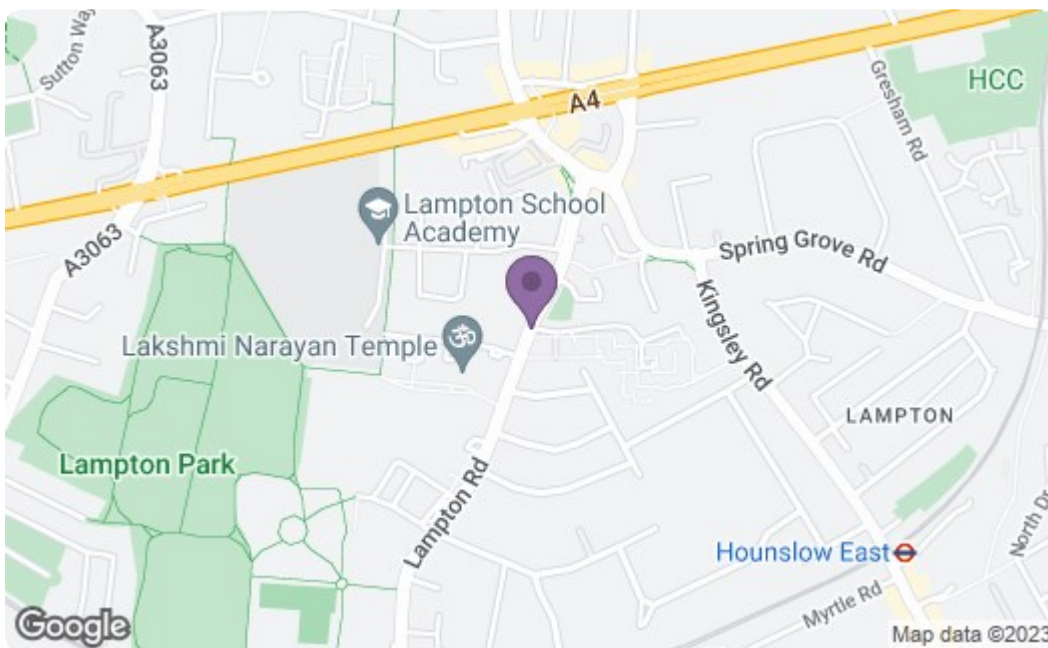
**Bathroom**

Panel enclosed bath with shower, hand wash basin, low level w/c, extractor fan, tiled flooring

Outside

Communal gardens and allocated parking space.





Energy Efficiency Rating		Current	Potential
Very energy efficient - lower running costs			
(92 plus) A			
(81-91) B		76	81
(69-80) C			
(55-68) D			
(39-54) E			
(21-38) F			
(1-20) G			
Not energy efficient - higher running costs			
England & Wales		EU Directive 2002/91/EC	
Environmental Impact (CO ₂) Rating		Current	Potential
Very environmentally friendly - lower CO ₂ emissions			
(92 plus) A			
(81-91) B			
(69-80) C		64	71
(55-68) D			
(39-54) E			
(21-38) F			
(1-20) G			
Not environmentally friendly - higher CO ₂ emissions			
England & Wales		EU Directive 2002/91/EC	

A partner of
The Guild Of Professional Estate Agents
 with a network of over 700 independent estate agents

Associated Office: 121 Park Lane, Mayfair, London W1K 7AG t 020 7318 7075